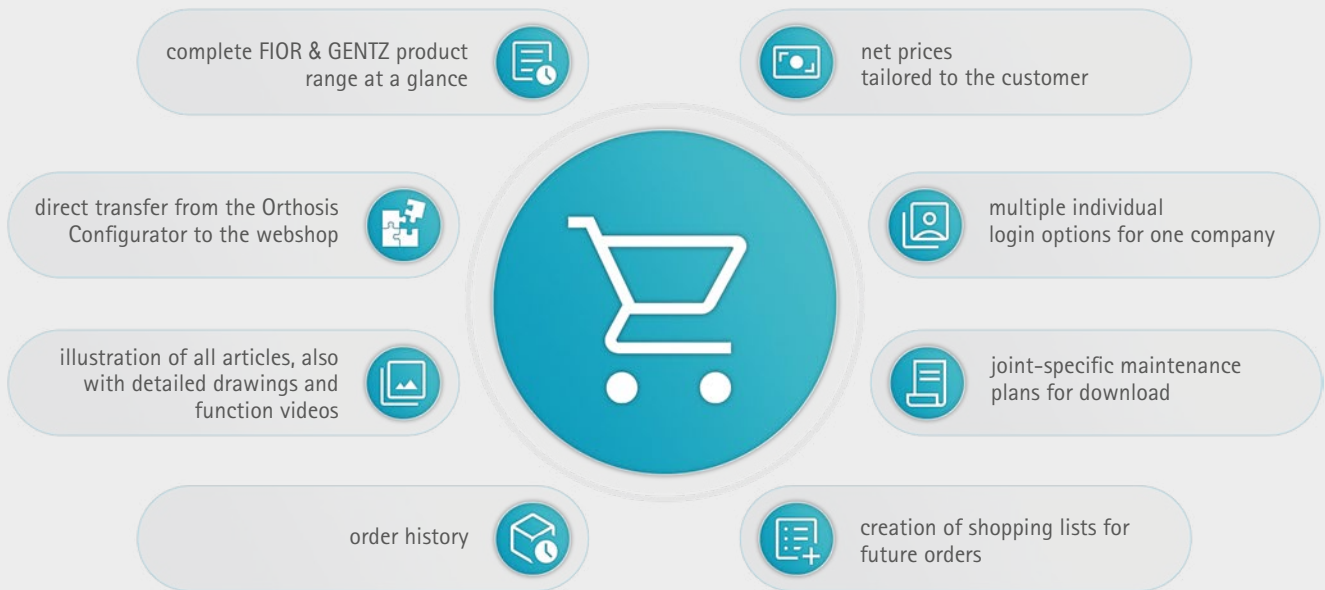




## Orthosis Shoes

Style and Function for Everyday Life

The webshop provides you with the entire FIOR & GENTZ product range in a user-friendly and interactive interface – from system joints to orthosis shoes. You will also always find the matching tools, materials and accessories associated with the selected product.



[webshop.fior-gentz.de/en/](https://webshop.fior-gentz.de/en/)











## Leather Shoes

### CITYDRIVE



The fashionable anthracite-coloured CITYDRIVE orthosis shoe is made of high-grade leather and ensures a good performance at every occasion. This elegant shoe is suited for casual as well as business occasions and available in the UK sizes 3.5 to 13 (EU 36-48).

[Read more on page 10](#)

### CROSSROADS



The durable CROSSROADS orthosis shoes are available in two different colours. The brown shoe with its multi-functional outsole made of EVA material and the black shoe with its particularly slip-resistant vibram® flat sole. CROSSROADS is available in the UK sizes 3.5 to 13 (EU 36-48).

Additionally, these durable shoes are available in two different widths that can be combined with each other.

[Read more on page 12](#)



## Fabric Shoes

### URBANSTREET



### PARKSTREET



The sporty URBANSTREET and PARKSTREET orthosis shoes provide the same functionality with a different, appealing colour design. As both shoes are made from the same last, the shoes' volume is identical as well.

Both are made of a durable, easy-to-clean fabric and impress with a light and flexible sole.

These unisex shoes are suited for young and old and available in the UK sizes 1 to 13 (EU 32-48).

[Read more on page 16](#)

## Special Features



### Comfortable Fit and Stability

All FIOR & GENTZ orthosis shoes provide a flexible volume and the highest wearing comfort with and without orthosis thanks to their integrated elastic textile material and two removable insoles (5mm each).

The heel strap facilitates putting on and taking off the shoe. The higher, anatomically formed upper and the integrated heel cap guarantee high stability.



### Durable Material

The fabric as well as the leather shoes feature a high level of workmanship as well as durability and are easy to clean.

### Different Shapes for Every Occasion

The different shoe models are suited for every occasion and the different shoe designs and sizes fit every foot.



### Shoe Laces

All orthosis shoes are delivered with an additional pair of longer shoe laces which enable one-handed lacing.

→ All orthosis shoes are sold in pairs exclusively.



[www.fior-gentz.com](http://www.fior-gentz.com)

→ [products/shoes/orthosis-shoes/one-handed-lacing.html](http://www.fior-gentz.com/products/shoes/orthosis-shoes/one-handed-lacing.html)





### Shoe Designs

Thanks to the elastic textile material, our orthosis shoes provide sufficient space to comfortably wear the shoe with or without orthosis.

We also provide orthosis shoes that fit on slender feet and thus do not need as much space inside the shoe, namely the orthosis shoe model CROSSROADS which is available in two widths.

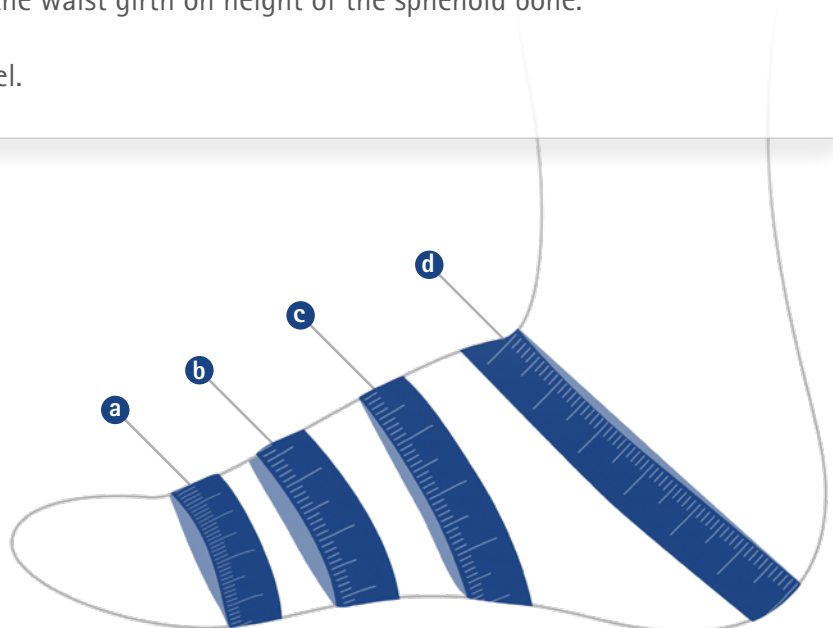
The REGULAR CROSSROADS orthosis shoe provides sufficient capacity to comfortably wear the shoe with and without orthosis.

The SLIM CROSSROADS orthosis shoe can be worn when the needed space should be less and ensures a stable footing for slender feet.

### Shoe Capacity

In order to compare the available capacity of the respective orthosis shoe to the actually needed space of the feet, measure the following girths with a flexible measuring tape:

- a Ball Girth:**  
Measure on the widest width in the ball area.
- b Waist Girth:**  
Measure over the arch on the narrowest part behind the ball area.
- c Instep Girth:**  
Measure over the arch parallel to the waist girth on height of the sphenoid bone.
- d Heel Girth:**  
Measure the widest part of the heel.







## Inner Shoe Length

The inner shoe lengths for each size can be found in the tables on the product pages of the respective orthosis shoe. In order to compare the inner shoe length to the actually needed space of the foot, measure the foot length as followed:

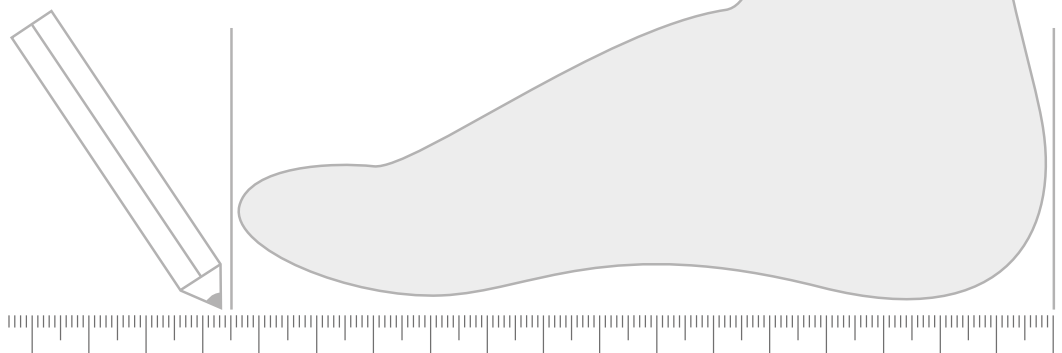
**Foot Length:** Measure from the middle of the heel area to the middle of the great toe with a standard measurement device.

## Shoe Size

You can find the UK and EU shoe sizes of the shoes in the tables on the product pages of the respective orthosis shoes.

We used the following calculation basis to determine the EU shoe sizes:

**Paris Point:**  $(\text{foot length} + 1.5\text{cm}) \times 1.5$



# CITYDRIVE

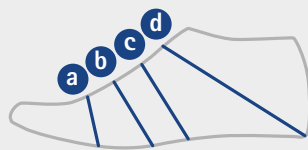
For Casual and Business Occasions



The anthracite-coloured CITYDRIVE orthosis shoe is an elegant shoe for casual and business occasions. The shoe is made of an high-quality nubuck leather exterior and a soft calf leather interior lining. It is delivered with two removable insoles, one with and one without leather coating.







CITYDRIVE							
Shoe Size		Article Number	Insole Length	Ball Girth (a)	Waist Girth (b)	Instep Girth (c)	Heel Girth (d)
UK	EU						
3.5	36	OS4110-36	235mm	232mm	240mm	245mm	332mm
4	37	OS4110-37	244mm	236mm	244mm	249mm	339mm
5	38	OS4110-38	249mm	240mm	248mm	253mm	346mm
5.5	39	OS4110-39	255mm	244mm	252mm	257mm	353mm
6	40	OS4110-40	262mm	248mm	256mm	261mm	360mm
7	41	OS4110-41	270mm	252mm	260mm	265mm	367mm
8	42	OS4110-42	277mm	256mm	264mm	269mm	374mm
9	43	OS4110-43	281mm	260mm	268mm	273mm	381mm
9.5	44	OS4110-44	289mm	264mm	272mm	277mm	388mm
10.5	45	OS4110-45	295mm	268mm	276mm	281mm	395mm
11	46	OS4110-46	300mm	272mm	280mm	285mm	402mm
12	47	OS4110-47	307mm	276mm	284mm	289mm	409mm
13	48	OS4110-48	314mm	280mm	288mm	295mm	416mm

Shoe Measurements		Use
Pitch*	10mm	h-Cast
Heel Height**	25mm	Orthosis Configurator

\* The height of the pitch corresponds to the height of the h-cast plate to be used in the physical examination.

\*\* The heel height is used in the Orthosis Configurator as part of the calculation basis.





# CROSSROADS

Durable and Comfy



The CROSSROADS orthosis shoe is a durable shoe. The shoe is made of an high-quality cow leather exterior and a soft calf leather interior. It is delivered with two removable insoles, one with and one without leather coating. CROSSROADS is available in different widths (REGULAR and SLIM) which can be combined with each other, when necessary.









REGULAR left and right for normal feet with and without orthosis			
Shoe Size UK	Shoe Size EU	Article Number CROSSROADS, Black	Article Number CROSSROADS, Brown
3,5	36	OS4500-36	OS4532-36
4	37	OS4500-37	OS4532-37
5	38	OS4500-38	OS4532-38
5,5	39	OS4500-39	OS4532-39
6	40	OS4500-40	OS4532-40
7	41	OS4500-41	OS4532-41
8	42	OS4500-42	OS4532-42
9	43	OS4500-43	OS4532-43
9,5	44	OS4500-44	OS4532-44
10,5	45	OS4500-45	OS4532-45
11	46	OS4500-46	OS4532-46
12	47	OS4500-47	OS4532-47
13	48	OS4500-48	OS4532-48



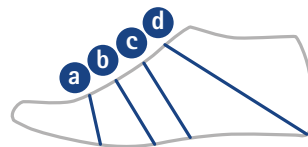
SLIM left and right for slender feet with and without orthosis			
Shoe Size UK	Shoe Size EU	Article Number CROSSROADS, Black	Article Number CROSSROADS, Brown
3,5	36	OS4100-36	OS4132-36
4	37	OS4100-37	OS4132-37
5	38	OS4100-38	OS4132-38
5,5	39	OS4100-39	OS4132-39
6	40	OS4100-40	OS4132-40
7	41	OS4100-41	OS4132-41
8	42	OS4100-42	OS4132-42
9	43	OS4100-43	OS4132-43
9,5	44	OS4100-44	OS4132-44
10,5	45	OS4100-45	OS4132-45
11	46	OS4100-46	OS4132-46
12	47	OS4100-47	OS4132-47
13	48	OS4100-48	OS4132-48



REGULAR left/SLIM right for slender feet with orthosis on the left leg			
Shoe Size UK	Shoe Size EU	Article Number CROSSROADS, Black	Article Number CROSSROADS, Brown
3,5	36	OS9900-36	OS9932-36
4	37	OS9900-37	OS9932-37
5	38	OS9900-38	OS9932-38
5,5	39	OS9900-39	OS9932-39
6	40	OS9900-40	OS9932-40
7	41	OS9900-41	OS9932-41
8	42	OS9900-42	OS9932-42
9	43	OS9900-43	OS9932-43
9,5	44	OS9900-44	OS9932-44
10,5	45	OS9900-45	OS9932-45
11	46	OS9900-46	OS9932-46
12	47	OS9900-47	OS9932-47
13	48	OS9900-48	OS9932-48



SLIM left/REGULAR right for slender feet with orthosis on the right leg			
Shoe Size UK	Shoe Size EU	Article Number CROSSROADS, Black	Article Number CROSSROADS, Brown
3,5	36	OS8900-36	OS8932-36
4	37	OS8900-37	OS8932-37
5	38	OS8900-38	OS8932-38
5,5	39	OS8900-39	OS8932-39
6	40	OS8900-40	OS8932-40
7	41	OS8900-41	OS8932-41
8	42	OS8900-42	OS8932-42
9	43	OS8900-43	OS8932-43
9,5	44	OS8900-44	OS8932-44
10,5	45	OS8900-45	OS8932-45
11	46	OS8900-46	OS8932-46
12	47	OS8900-47	OS8932-47
13	48	OS8900-48	OS8932-48

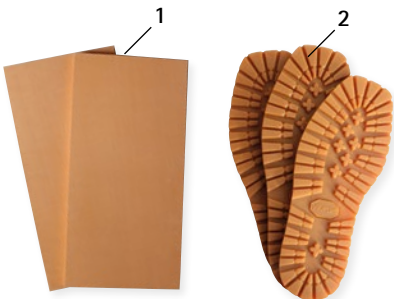


Shoe Measurements			CROSSROADS SLIM				CROSSROADS REGULAR			
Shoe Size UK	Shoe Size EU	Inner Shoe Length	Ball Girth (a)	Waist Girth (b)	Instep Girth (c)	Heel Girth (d)	Ball Girth (a)	Waist Girth (b)	Instep Girth (c)	Heel Girth (d)
3.5	36	235mm	224mm	228mm	240mm	328mm	240mm	241mm	250mm	345mm
4	37	242mm	227mm	233mm	243mm	335mm	240mm	247mm	254mm	346mm
5	38	249mm	232mm	238mm	246mm	344mm	244mm	251mm	261mm	352mm
5.5	39	254mm	237mm	242mm	250mm	353mm	249mm	255mm	268mm	363mm
6	40	261mm	242mm	249mm	259mm	360mm	255mm	260mm	273mm	378mm
7	41	268mm	246mm	252mm	261mm	367mm	260mm	265mm	278mm	381mm
8	42	275mm	250mm	257mm	269mm	374mm	264mm	270mm	282mm	389mm
9	43	281mm	253mm	262mm	274mm	380mm	270mm	276mm	289mm	394mm
9.5	44	287mm	257mm	266mm	278mm	388mm	274mm	281mm	294mm	400mm
10.5	45	294mm	261mm	272mm	282mm	399mm	279mm	286mm	299mm	408mm
11	46	301mm	263mm	276mm	287mm	410mm	284mm	290mm	307mm	415mm
12	47	307mm	267mm	280mm	292mm	417mm	290mm	295mm	310mm	421mm
13	48	314mm	273mm	284mm	297mm	421mm	295mm	303mm	313mm	426mm





Concerning CROSSROADS, it is possible to attach an outsole elevation with an EVA sheet or to attach a vibram® flat sole (made of rubber mixture) under the shoe for some extra slip resistance.

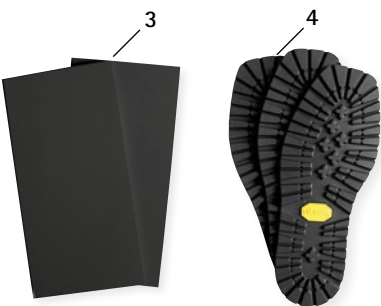


**Accessory Parts for CROSSROADS, Brown**

Item	Article Number	Length x Width x Thickness [mm]	Description	Unit
1	PL4532-0S	400 x 200 x 20	EVA sheet for outsole elevation, orange	sheet

**Accessory Parts for CROSSROADS, Brown**

Item	Article Number	Shoe Size		Description	Unit
		UK	EU		
2	FS9701-3738	3.5/4	37/38	vibram® flat sole, honey	pair
2	FS9701-3940	5.5/6	39/40	vibram® flat sole, honey	pair
2	FS9701-4142	7/8	41/42	vibram® flat sole, honey	pair
2	FS9701-4344	9/9.5	43/44	vibram® flat sole, honey	pair
2	FS9701-4546	10.5/11	45/46	vibram® flat sole, honey	pair
2	FS9701-4748	12/13	47/48	vibram® flat sole, honey	pair



**Accessory Parts for CROSSROADS, Black**

Item	Article Number	Length x Width x Thickness [mm]	Description	Unit
3	PL4500-0S	400 x 200 x 20	EVA sheet for outsole elevation, black	sheet

**Accessory Parts for CROSSROADS, Black**

Item	Article Number	Shoe Size		Description	Unit
		UK	EU		
4	FS9702-3738	3.5/4	37/38	vibram® flat sole, black	pair
4	FS9702-3940	5.5/6	39/40	vibram® flat sole, black	pair
4	FS9702-4142	7/8	41/42	vibram® flat sole, black	pair
4	FS9702-4344	9/9.5	43/44	vibram® flat sole, black	pair
4	FS9702-4546	10.5/11	45/46	vibram® flat sole, black	pair
4	FS9702-4748	12/13	47/48	vibram® flat sole, black	pair

Shoe Measurements		Use
Pitch*	15mm	h-Cast
Heel Height**	25mm	Orthosis Configurator

\* The height of the pitch corresponds to the height of the h-cast plate to be used in the physical examination.

\*\* The heel height is used in the Orthosis Configurator as part of the calculation basis.

# URBANSTREET

Style and Function for Everyday Life



# PARKSTREET

Sporty on the Go

The URBANSTREET and PARKSTREET orthosis shoes provide adjustable hook and loop fasteners which, in combination with the laces, ensure an enlarged shoe opening. As a result, putting on and taking off the shoes is particularly easy. The durable fabric and the slip-resistant outsole made of EVA material make the shoe extra light. The shoe is delivered with two removable insoles which can be used as volume compensation.











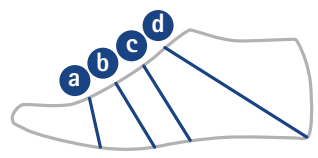




URBANSTREET			
Shoe Size		Article Number	Insole Length
UK	EU		
0	32	054921-32	209mm
1	33	054921-33	216mm
2	34	054921-34	223mm
2.5	35	054921-35	229mm
3.5	36	054921-36	235mm
4	37	054921-37	242mm
5	38	054921-38	249mm
5.5	39	054921-39	254mm
6	40	054921-40	261mm
7	41	054921-41	268mm
8	42	054921-42	275mm
9	43	054921-43	281mm
9.5	44	054921-44	287mm
10.5	45	054921-45	294mm
11	46	054921-46	301mm
12	47	054921-47	307mm
13	48	054921-48	314mm

PARKSTREET			
Shoe Size		Article Number	Insole Length
UK	EU		
0	32	054941-32	209mm
1	33	054941-33	216mm
2	34	054941-34	223mm
2.5	35	054941-35	229mm
3.5	36	054941-36	235mm
4	37	054941-37	242mm
5	38	054941-38	249mm
5.5	39	054941-39	254mm
6	40	054941-40	261mm
7	41	054941-41	268mm
8	42	054941-42	275mm
9	43	054941-43	281mm
9.5	44	054941-44	287mm
10.5	45	054941-45	294mm
11	46	054941-46	301mm
12	47	054941-47	307mm
13	48	054941-48	314mm

Shoe Measurements URBANSTREET AND PARKSTREET					
Shoe Size		Ball Girth (a)	Waist Girth (b)	Instep Girth (c)	Heel Girth (d)
UK	EU				
0	32	210mm	225mm	230mm	294mm
1	33	216mm	227mm	235mm	304mm
2	34	220mm	230mm	250mm	310mm
2.5	35	230mm	240mm	255mm	317mm
3.5	36	232mm	240mm	255mm	327mm
4	37	235mm	245mm	262mm	334mm
5	38	243mm	251mm	270mm	341mm
5.5	39	245mm	257mm	273mm	352mm
6	40	252mm	266mm	282mm	357mm
7	41	255mm	268mm	285mm	368mm
8	42	259mm	273mm	289mm	375mm
9	43	265mm	274mm	291mm	383mm
9.5	44	271mm	282mm	295mm	387mm
10.5	45	276mm	284mm	305mm	394mm
11	46	280mm	290mm	316mm	409mm
12	47	286mm	296mm	321mm	411mm
13	48	292mm	298mm	325mm	415mm



Shoe Measurements	Use	
Pitch*	0mm	h-Cast
Heel Height**	14mm	Orthosis Configurator

\* The height of the pitch corresponds to the height of the h-cast plate to be used in the physical examination.  
 \*\* The heel height is used in the Orthosis Configurator as part of the calculation basis.

