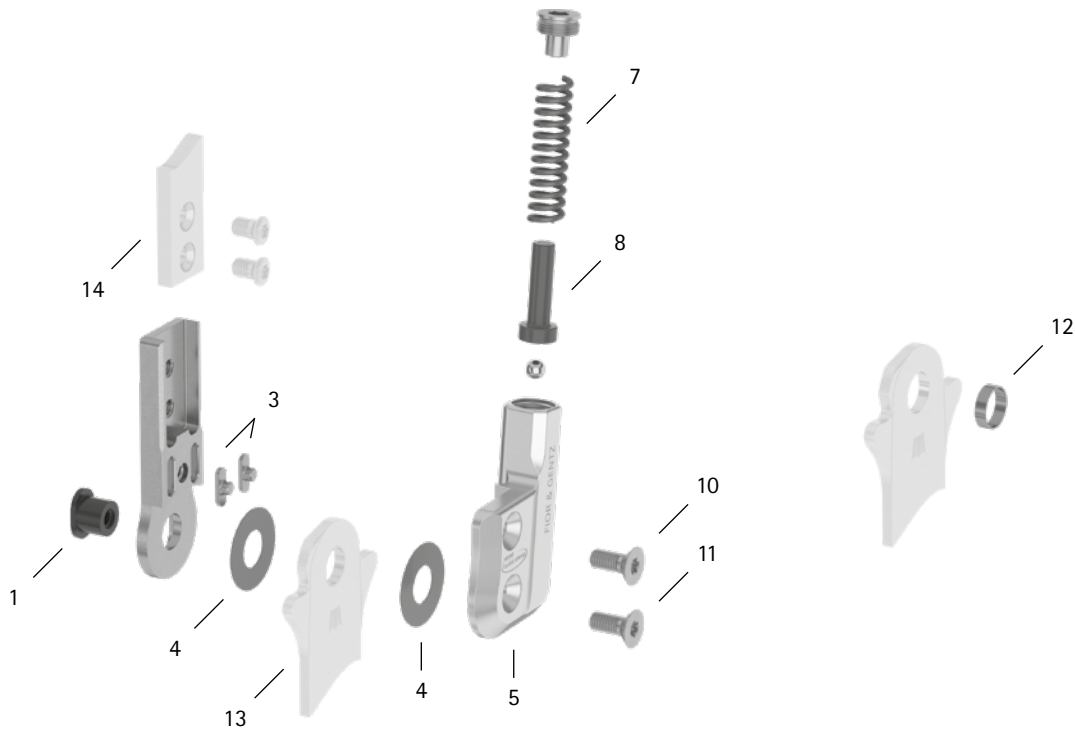


patient commission/configuration ID \_\_\_\_\_



Item	16mm	Description	Potential Problem	Measure	Recommended Inspection, Potential Replacement*	Latest Replacement after
<b>System Joint</b>						
1	SB9669-L0760	bearing nut	wear	wear	every 6 months	36 months
3	SF0393-02	feather key with pin	breakage	replacing	every 6 months	36 months
4	GS2210-040	sliding washer, Ø = 22mm	wear	replacing	every 6 months	18 months
4	GS2210-045					
4	GS2210-050					
4	GS2210-055					
4	GS2210-060					
5	SF0763-L/AL	cover plate, left lateral or right medial**	wear	replacing	every 6 months	36 months
5	SF0763-R/AL	cover plate, left medial or right lateral**	wear	replacing	every 6 months	36 months
7	FE2945-01	pressure spring, golden**	wear	replacing	every 6 months	18 months
8	SF0843-10	pin**	wear	replacing	every 6 months	36 months
10	SC1405-L12	countersunk flat head screw with hexalobular socket**	wear	replacing	every 6 months	36 months
11	SC1405-L12	countersunk flat head screw with hexalobular socket (axle screw)**				
5-11	SF7973-L/AL	functional unit plug + go modularity, left lateral or right medial***	loss of function, wear	replacing	every 6 months	36 months
5-11	SF7973-R/AL	functional unit plug + go modularity, left medial or right lateral***				
<b>System Stirrups, System Anchors and System Side Bars</b>						
12	BR1110-L030	sliding bushing	wear	replacing	every 6 months	18 months
13	see catalogue	system stirrup	wear or breakage	replacing	every 6 months	48 months
14	see catalogue	system anchor and system side bar	wear or breakage	replacing	every 6 months	if required

\* depending on the assessment of the distributor of the custom-made product regarding the patient's usage behaviour

\*\* is part of the functional unit

\*\*\* included system components can be exchanged separately

WP0048-GB-2023-01