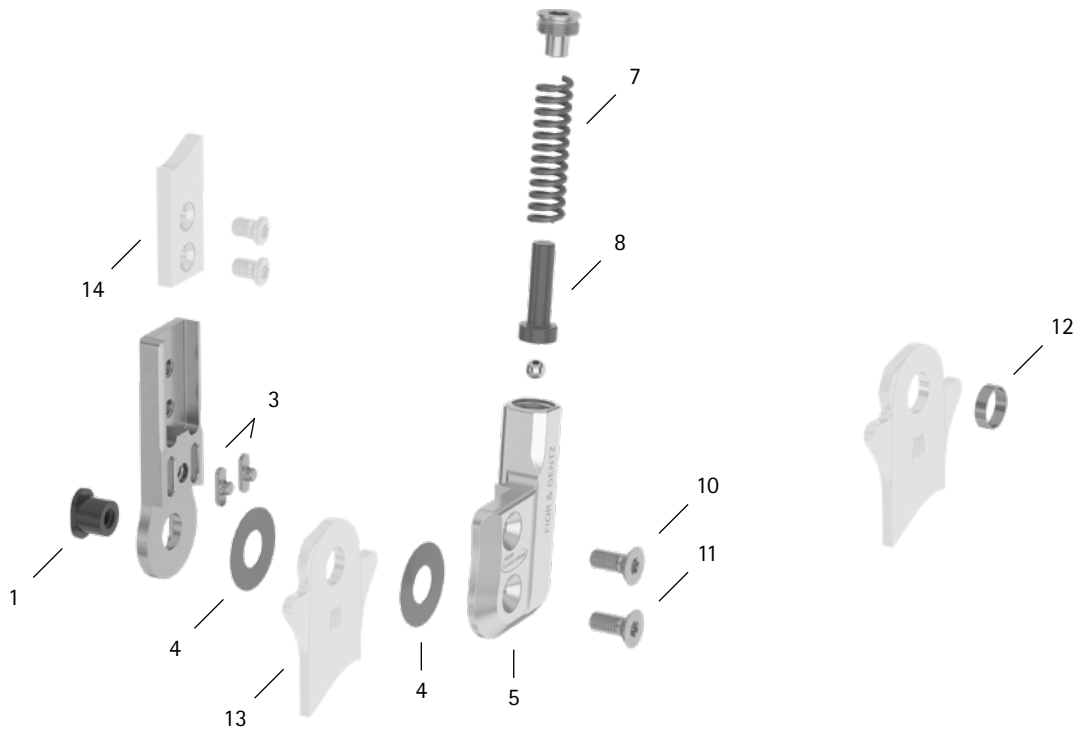


patient commission/configuration ID _____



Item	12mm	Description	Potential Problem	Measure	Recommended Inspection, Potential Replacement*	Latest Replacement after
System Joint						
1	SB7049-L0590	bearing nut	wear	wear	every 6 months	36 months
3	SF0391-01	feather key with pin	breakage	replacing	every 6 months	36 months
4	GS1407-040	sliding washer, Ø = 14mm	wear	replacing	every 6 months	18 months
4	GS1407-045					
4	GS1407-050					
4	GS1407-055					
4	GS1407-060					
5	SF0761-L/AL	cover plate, left lateral or right medial**	wear	replacing	every 6 months	36 months
5	SF0761-R/AL	cover plate, left medial or right lateral**	wear	replacing	every 6 months	36 months
7	FE1734-01	pressure spring, golden**	wear	replacing	every 6 months	18 months
8	SF0841-07	pin**	wear	replacing	every 6 months	36 months
10	SC1404-L10	countersunk flat head screw with hexalobular socket**	wear	replacing	every 6 months	36 months
11	SC1404-L10	countersunk flat head screw with hexalobular socket (axle screw)**				
5-11	SF7971-L/AL	functional unit plug + go modularity, left lateral or right medial***	loss of function, wear	replacing	every 6 months	36 months
5-11	SF7971-R/AL	functional unit plug + go modularity, left medial or right lateral***				
System Stirrups, System Anchors and System Side Bars						
12	BR0807-L020	sliding bushing	wear	replacing	every 6 months	18 months
13	see catalogue	system stirrup	wear or breakage	replacing	every 6 months	48 months
14	see catalogue	system anchor and system side bar	wear or breakage	replacing	every 6 months	if required

* depending on the assessment of the distributor of the custom-made product regarding the patient's usage behaviour

** is part of the functional unit

*** included system components can be exchanged separately

WP0030-GB-2023-01