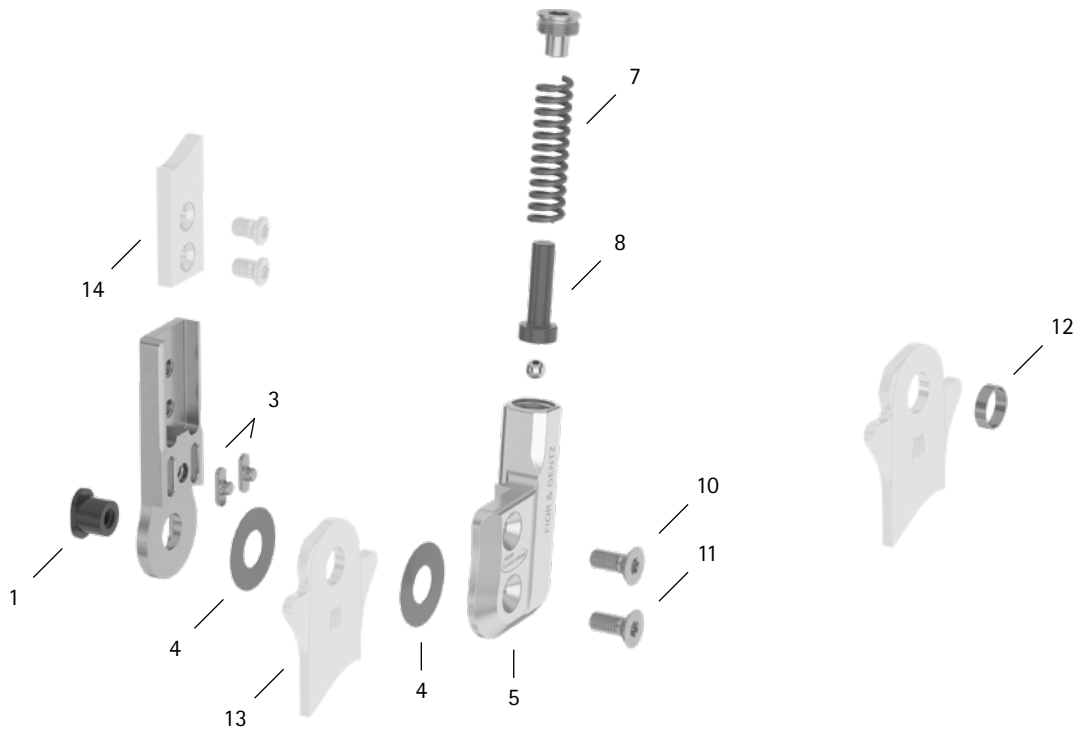


patient commission/configuration ID \_\_\_\_\_



| Item  | 10mm          | Description   | Potential Problem      | Measure   | Recommended Inspection, Potential Replacement* | Latest Replacement after |
|---|---------------|---|------------------------|-----------|--|--------------------------|
| <b>System Joint</b>   |               |   |                        |           |  |                          |
| 1   | SB6039-L0580  | bearing nut   | wear                   | wear      | every 6 months                                 | 36 months                |
| 3   | SF0390-01     | feather key with pin  | breakage               | replacing | every 6 months                                 | 36 months                |
| 4   | GS1206-040    | sliding washer, Ø = 12mm  | wear                   | replacing | every 6 months                                 | 18 months                |
| 4   | GS1206-045    |   |                        |           |  |                          |
| 4   | GS1206-050    |   |                        |           |  |                          |
| 4   | GS1206-055    |   |                        |           |  |                          |
| 4   | GS1206-060    |   |                        |           |  |                          |
| 5   | SF0760-L/AL   | cover plate, left lateral or right medial**                           | wear                   | replacing | every 6 months                                 | 36 months                |
| 5   | SF0760-R/AL   | cover plate, left medial or right lateral**                           | wear                   | replacing | every 6 months                                 | 36 months                |
| 7   | FE1622-01     | pressure spring, golden**   | wear                   | replacing | every 6 months                                 | 18 months                |
| 8   | SF0840-07     | pin**   | wear                   | replacing | every 6 months                                 | 36 months                |
| 10  | SC1403-L08    | countersunk flat head screw with hexalobular socket**                 | wear                   | replacing | every 6 months                                 | 36 months                |
| 11  | SC1403-L08    | countersunk flat head screw with hexalobular socket (axle screw)**    |                        |           |  |                          |
| 5-11  | SF7970-L/AL   | functional unit plug + go modularity, left lateral or right medial*** | loss of function, wear | replacing | every 6 months                                 | 36 months                |
| 5-11  | SF7970-R/AL   | functional unit plug + go modularity, left medial or right lateral*** |                        |           |  |                          |
| <b>System Stirrups, System Anchors and System Side Bars</b> |               |   |                        |           |  |                          |
| 12  | BP0706-L020   | sliding bushing   | wear                   | replacing | every 6 months                                 | 18 months                |
| 13  | see catalogue | system stirrup  | wear or breakage       | replacing | every 6 months                                 | 48 months                |
| 14  | see catalogue | system anchor and system side bar                                     | wear or breakage       | replacing | every 6 months                                 | if required              |

\* depending on the assessment of the distributor of the custom-made product regarding the patient's usage behaviour

\*\* is part of the functional unit

\*\*\* included system components can be exchanged separately

WP0021-GB-2023-01