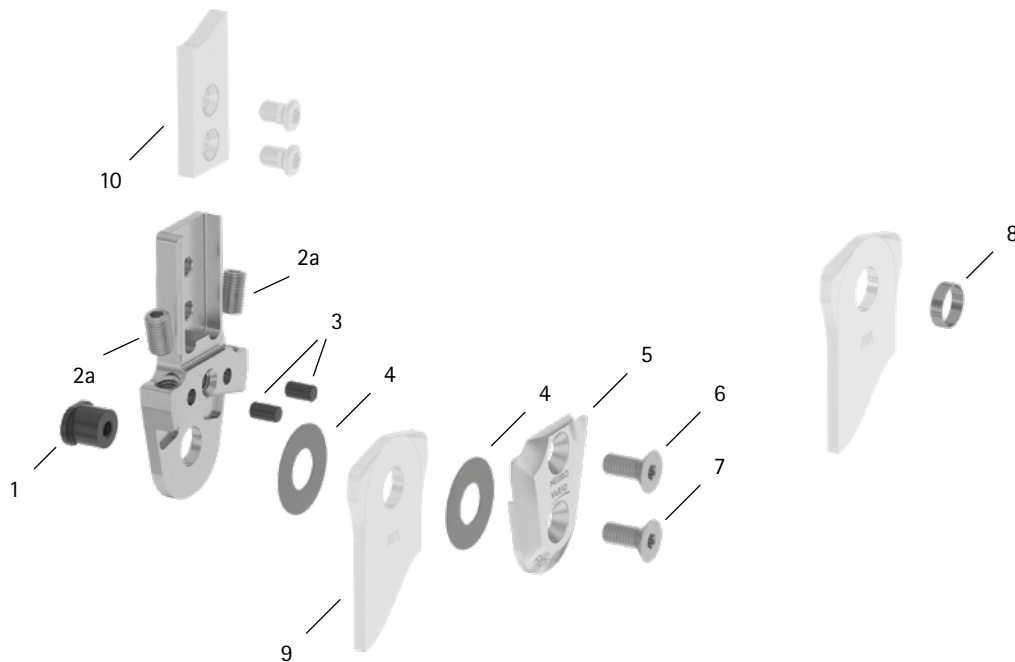


patient commission/configuration ID \_\_\_\_\_



Item	20mm	Description	Potential Problem	Measure	Recommended Inspection, Potential Replacement*	Latest Replacement after
<b>System Joint</b>						
1	SB1069-L0810	bearing nut	wear	replacing	every 6 months	36 months
2a	SC9606-L10ST	adjusting screw	wear	replacing	every 6 months	if required
3	GS4007	securing pin	wear	replacing	every 6 months	if required
4	GS2611-040	sliding washer, Ø = 26mm	wear	replacing	every 6 months	18 months
4	GS2611-045					
4	GS2611-050					
4	GS2611-055					
4	GS2611-060					
5	SF0265-AL	cover plate	wear	replacing	every 6 months	36 months
6	SC1405-L12	countersunk flat head screw with hexalobular socket	wear	replacing	every 6 months	36 months
7	SC1406-L12	countersunk flat head screw with hexalobular socket (axle screw)				
<b>System Stirrups, System Anchors and System Side Bars</b>						
8	BR1211-L030	sliding bushing	wear	replacing	every 6 months	18 months
9	see catalogue	system stirrup	wear or breakage	replacing	every 6 months	48 months
10	see catalogue	system anchor and system side bar	wear or breakage	replacing	every 6 months	if required

\* depending on the assessment of the distributor of the custom-made product regarding the patient's usage behaviour