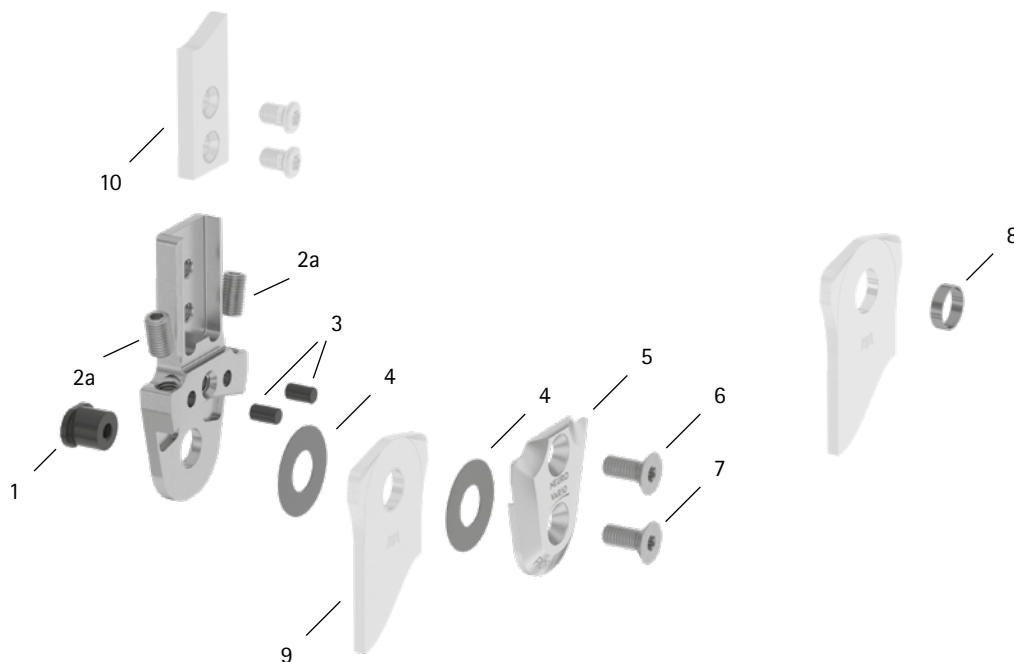


patient commission/configuration ID _____



Item	12mm	Description	Potential Problem	Measure	Recommended Inspection, Potential Replacement*	Latest Replacement after
System Joint						
1	SB7049-L0590	bearing nut	wear	replacing	every 6 months	36 months
2a	SC9604-L065T	adjusting screw	wear	replacing	every 6 months	if required
3	GS4007	securing pin	wear	replacing	every 6 months	if required
4	GS1407-040	sliding washer, Ø = 14mm	wear	replacing	every 6 months	18 months
4	GS1407-045					
4	GS1407-050					
4	GS1407-055					
4	GS1407-060					
5	SF0261-AL	cover plate	wear	replacing	every 6 months	36 months
6	SC1404-L08	countersunk flat head screw with hexalobular socket	wear	replacing	every 6 months	36 months
7	SC1404-L08	countersunk flat head screw with hexalobular socket (axle screw)				
System Stirrups, System Anchors and System Side Bars						
8	BR0807-L020	sliding bushing	wear	replacing	every 6 months	18 months
9	see catalogue	system stirrup	wear or breakage	replacing	every 6 months	48 months
10	see catalogue	system anchor and system side bar	wear or breakage	replacing	every 6 months	if required

* depending on the assessment of the distributor of the custom-made product regarding the patient's usage behaviour