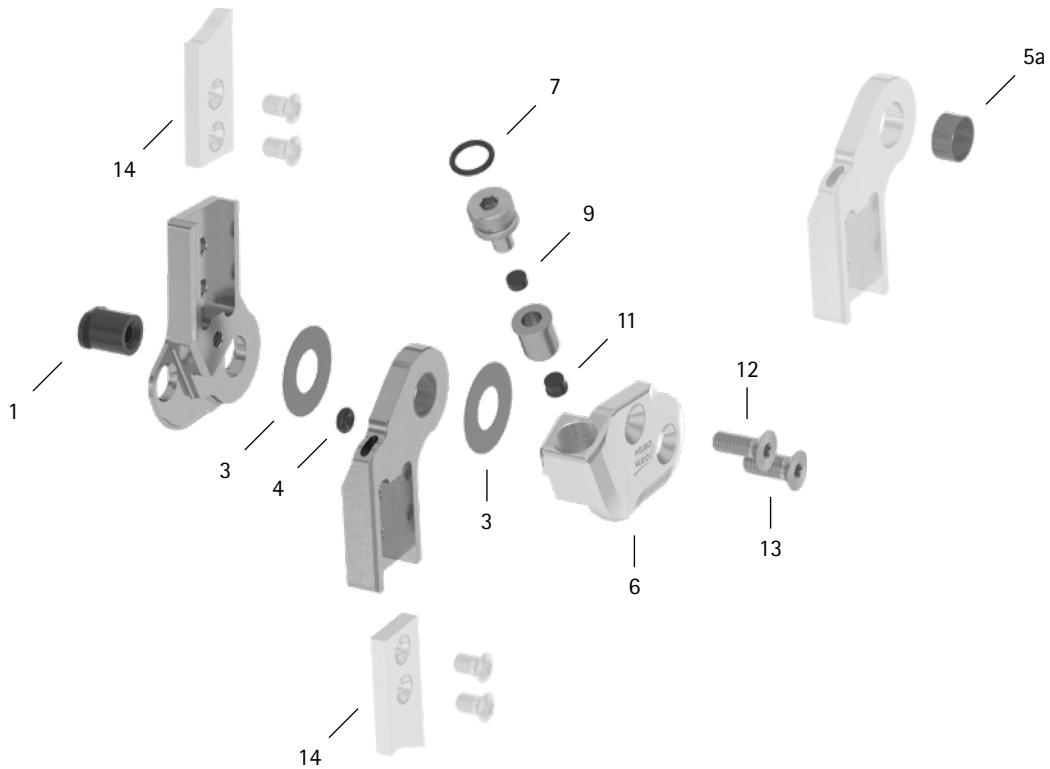
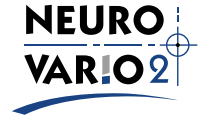


patient commission/configuration ID _____



Item	16mm	Description	Potential Problem	Measure	Recommended Inspection, Potential Replacement*	Latest Replacement after
System Joint						
1	SB1069-L1060	bearing nut	wear	replacing	every 6 months	36 months
3	GS2311-040	sliding washer, Ø = 23mm	wear	replacing	every 6 months	18 months
3	GS2311-045					
3	GS2311-050					
3	GS2311-055					
3	GS2311-060					
4	VE3771-012/26	O-ring damper	wear	replacing	every 6 months	18 months
5a	BP1211-L055	sliding bushing	wear	replacing	every 6 months	18 months
6	SL0263-L/AL	cover plate, left lateral or right medial, aluminium**	wear	replacing	every 6 months	36 months
6	SL0263-R/AL	cover plate, left medial or right lateral, aluminium**	wear	replacing	every 6 months	36 months
7	VE3771-08/15	O-ring for securing the alignment screw**	wear	replacing	every 6 months	18 months
9	PN0005-L02	stop damper**	wear	replacing	every 6 months	18 months
11	SL0283-05	extension stop**	wear	replacing	every 6 months	if required
12	SC1405-L14	countersunk flat head screw with hexalobular socket**	wear	replacing	every 6 months	36 months
13	SC1406-L14	countersunk flat head screw with hexalobular socket (axle screw)**				
6-13	SL2933-L	functional unit plug + go modularity, left lateral or right medial***	loss of function, wear	replacing	every 6 months	36 months
6-13	SL2933-R	functional unit plug + go modularity, left medial or right lateral***				
System Anchors and System Side Bars						
14	see catalogue	system anchor and system side bar	wear or breakage	replacing	every 6 months	if required

* depending on the assessment of the distributor of the custom-made product regarding the patient's usage behaviour

** is part of the functional unit

*** included system components can be exchanged separately