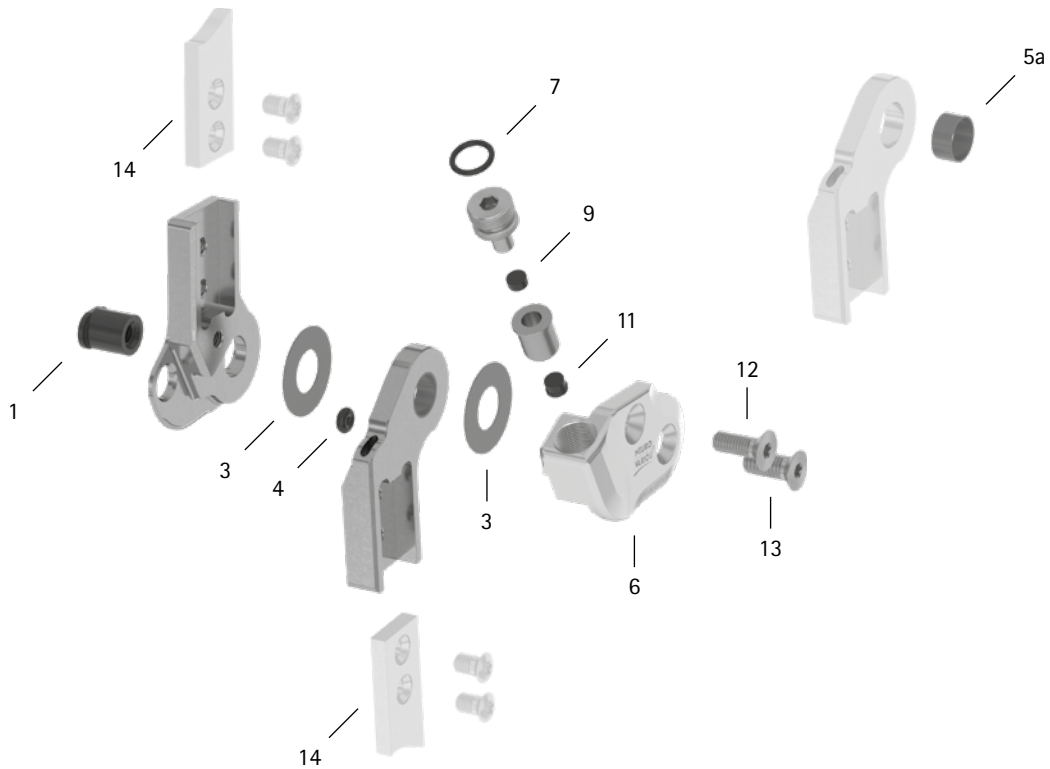
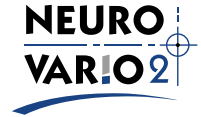


patient commission/configuration ID \_\_\_\_\_



Item	14mm	Description	Potential Problem	Measure	Recommended Inspection, Potential Replacement*	Latest Replacement after
<b>System Joint</b>						
1	SB9669-L0950	bearing nut	wear	replacing	every 6 months	36 months
3	GS1910-040	sliding washer, Ø = 19mm	wear	replacing	every 6 months	18 months
3	GS1910-045					
3	GS1910-050					
3	GS1910-055					
3	GS1910-060					
4	VE3771-010/20	O-ring damper	wear	replacing	every 6 months	18 months
5a	BP1110-L050	sliding bushing	wear	replacing	every 6 months	18 months
6	SL0262-L/AL	cover plate, left lateral or right medial, aluminium**	wear	replacing	every 6 months	36 months
6	SL0262-R/AL	cover plate, left medial or right lateral, aluminium**				
7	VE3771-050/10	O-ring for securing the alignment screw**	wear	replacing	every 6 months	18 months
9	PN0004-L02	stop damper**	wear	replacing	every 6 months	18 months
11	SL0282-04	extension stop**	wear	replacing	every 6 months	if required
12	SC1405-L12	countersunk flat head screw with hexalobular socket**	wear	replacing	every 6 months	36 months
13	SC1405-L12	countersunk flat head screw with hexalobular socket (axle screw)**				
6-13	SL2932-L	functional unit plug + go modularity, left lateral or right medial***	loss of function, wear	replacing	every 6 months	36 months
6-13	SL2932-R	functional unit plug + go modularity, left medial or right lateral***				
<b>System Anchors and System Side Bars</b>						
14	see catalogue	system anchor and system side bar	wear or breakage	replacing	every 6 months	if required

\* depending on the assessment of the distributor of the custom-made product regarding the patient's usage behaviour

\*\* is part of the functional unit

\*\*\* included system components can be exchanged separately