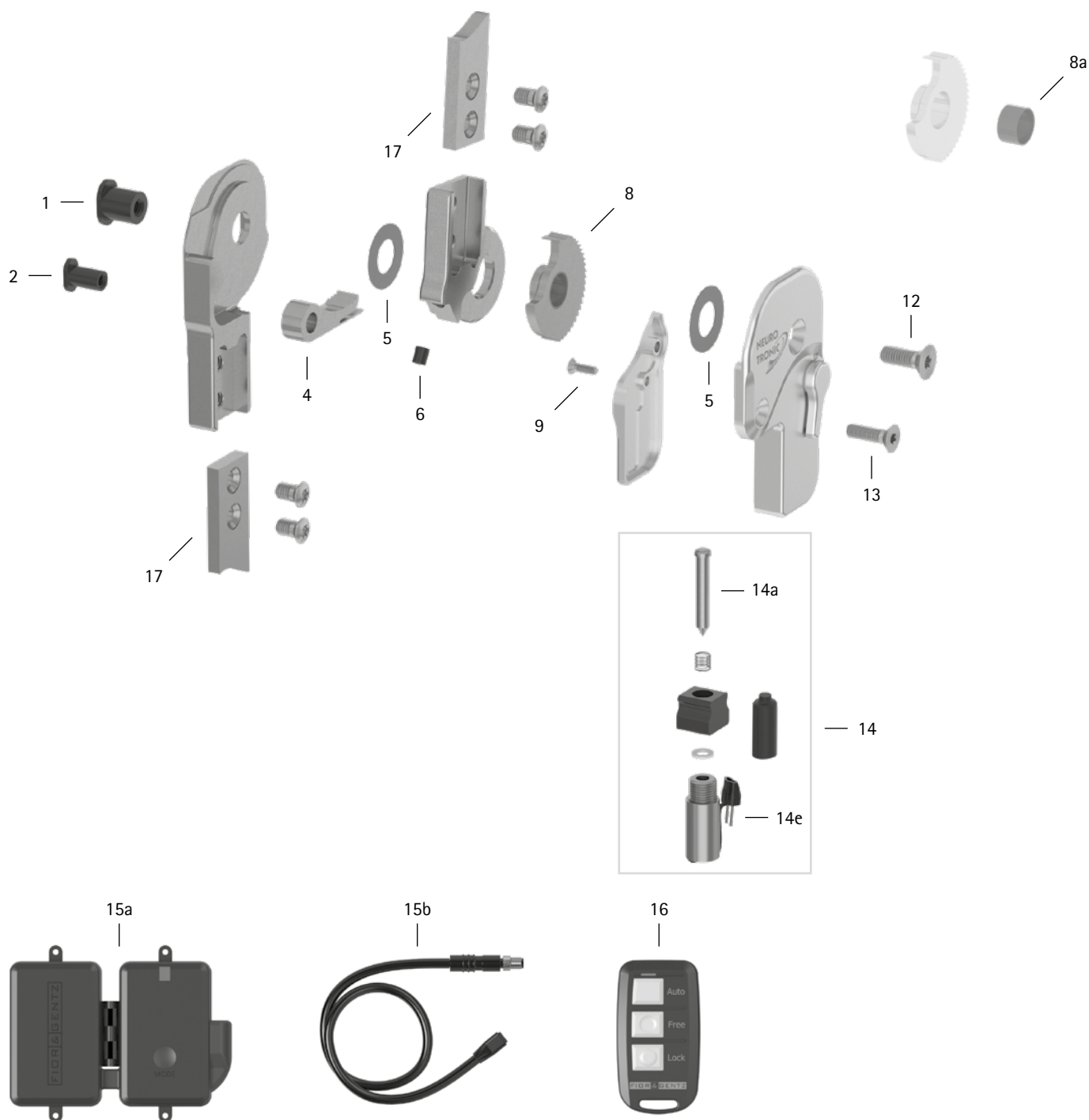


patient commission/configuration ID _____



Item	20mm	Description	Potential Problem	Measure	Recommended Inspection, Potential Replacement*	Latest Replacement after
System Joint						
1	SB1069-L1000	bearing nut (joint axis)	wear	replacing	every 6 months	36 months
2	SB8559-L1000	bearing nut (locking pawl)				
4	SK0375-2	locking pawl	wear of the teeth	replacing	every 3 months	12 months at activity level 1 and 2 9 months at activity level 3 6 months at activity level 4

patient commission/configuration ID _____

Item	20mm	Description	Potential Problem	Measure	Recommended Inspection, Potential Replacement*	Latest Replacement after
5	GS2411-040	sliding washer, Ø = 24mm	wear	replacing	every 6 months	18 months
5	GS2411-045					
5	GS2411-050					
5	GS2411-055					
5	GS2411-060					
6	PN1000-L06	extension stop damper	wear	replacing	every 6 months	18 months
8	SK0365-2L	toothed ring with sliding bushing, left lateral or right medial, titanium	wear of the teeth	replacing	every 3 months	12 months at activity level 1 and 2
8	SK0365-2R	toothed ring with sliding bushing, left medial or right lateral, titanium				9 months at activity level 3
8a	BP1211-L059	sliding bushing	wear	replacing		every 6 months
9	SC1403-L08/1	countersunk flat head screw with hexalobular socket**	wear	replacing	every 6 months	36 months
12	SC1406-L14	countersunk flat head screw with hexalobular socket (axle screw)**	wear	replacing	every 6 months	36 months
13	SC1405-L14	countersunk flat head screw with hexalobular socket**				
14	SK0385	solenoid**	soiling	removing dirt from solenoid and plunger	every 3 months	36 months
14a	SK0385-01	plunger for solenoid**				
14e	SK0385-00	solenoid without plunger, with connector**				
9-14	SK3885-L	functional unit, left lateral or right medial***	loss of function, wear	replacing	every 6 months	36 months
9-14	SK3885-R	functional unit, left medial or right lateral***				
15a	ET3850	controller with Bluetooth with lithium-polymer battery	outdated software	updating software	every 6 months	36 months
			low battery health	replacing controller		
15b	ET0712-01	connection cable for solenoid, unilateral, 300mm	damage	replacing	every 6 months	if required
15b	ET0712-02	connection cable for solenoid, bilateral, 420mm				
Remote Control						
16	ET3840-P	remote control with Bluetooth for the patient	outdated software	updating software	every 6 months	36 months
Software for Mobile Devices						
-	-	software for mobile devices (operating system, Expert App, User App)	security gaps in the software	updating software	every 6 months	if required
System Anchors and System Side Bars						
17	see catalogue	system anchor and system side bar	wear or breakage	replacing	every 6 months	if required

* depending on the assessment of the distributor of the custom-made product regarding the patient's usage behaviour

** is part of the functional unit

*** included system components can be exchanged separately