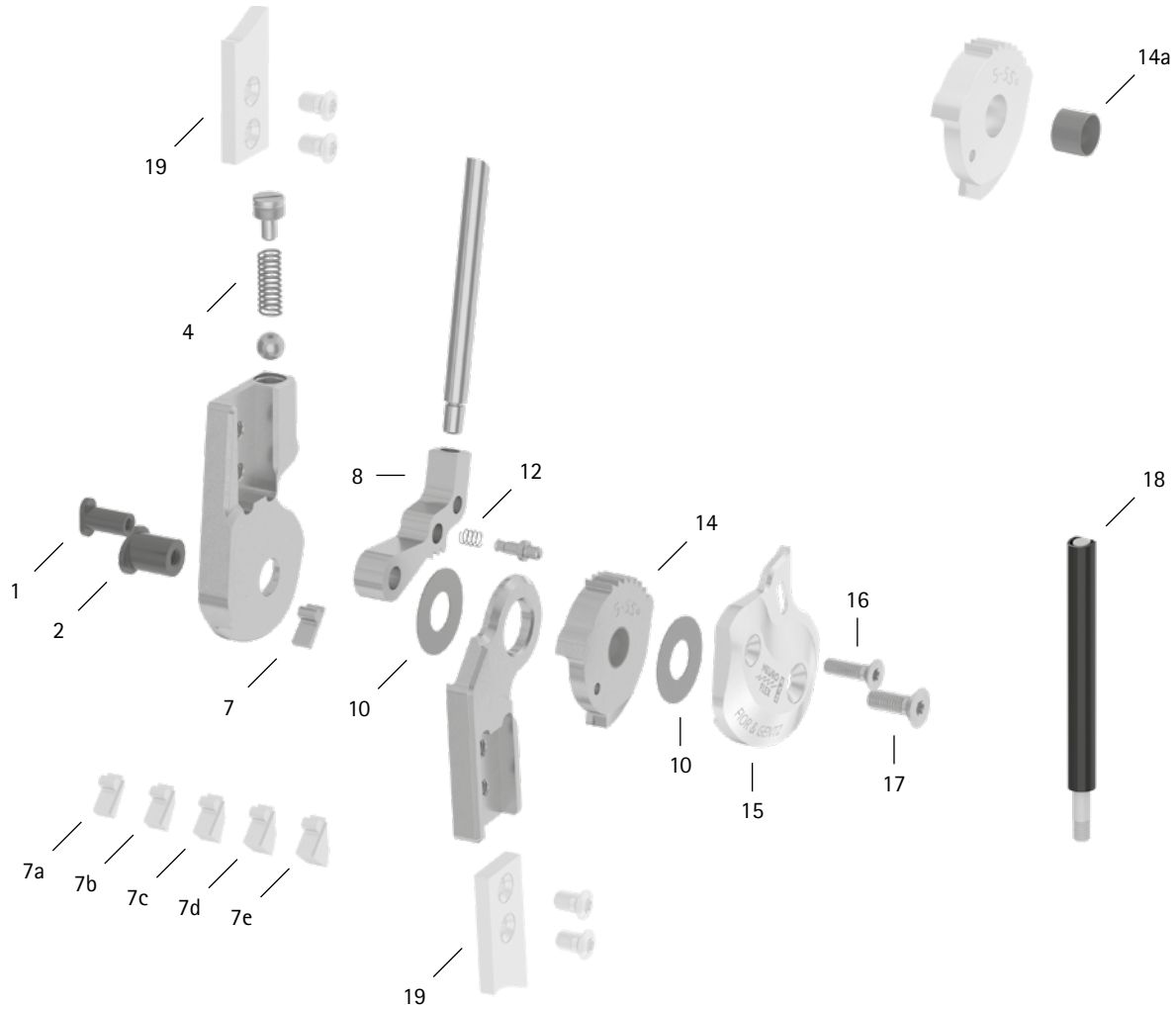


patient commission/configuration ID _____



Item	20mm	Description	Potential Problem	Measure	Recommended Inspection, Potential Replacement*	Latest Replacement after
System Joint						
1	SB8559-L1290	bearing nut (locking pawl)	wear	replacing	every 6 months	36 months
2	SB1069-L1290	bearing nut (joint axis)	wear	replacing	every 6 months	36 months
4	FE2726-01	pressure spring	wear	replacing	every 6 months	18 months
7	SK9805-E005	5° extension stop	wear	replacing	every 6 months	if required
7a	SK9805-E010	10° extension stop				
7b	SK9805-E015	15° extension stop				
7c	SK9805-E020	20° extension stop				
7d	SK9805-E025	25° extension stop				
7e	SK9805-E030	30° extension stop				

WFO108-GB-2023-01

patient commission/configuration ID _____

Item	20mm	Description	Potential Problem	Measure	Recommended Inspection, Potential Replacement*	Latest Replacement after
8	SK0765-L/025	step lock pawl**	wear of the detents	replacing	every 6 months	18 months***
8	SK0765-L/050					
8	SK0765-L/063					
8	SK0765-L/075					
8	SK0765-L/088					
10	GS2411-040	sliding washer, Ø = 24mm	wear	replacing	every 6 months	18 months
10	GS2411-045					
10	GS2411-050					
10	GS2411-055					
10	GS2411-060					
12	FE1411-02	pressure spring	wear	replacing	every 6 months	18 months
14	SK0795-2L/TI	5° step lock stop disc with sliding bushing, 5°-55°, in 10° steps, left lateral or right medial, titanium	wear of the detents	replacing	every 6 months	18 months***
14	SK0795-2R/TI	5° step lock stop disc with sliding bushing, 5°-55°, in 10° steps, left medial or right lateral, titanium				
14a	BP1211-L090	sliding bushing	wear	replacing	every 6 months	18 months
15	SK0765-2L/AL	cover plate, left lateral or right medial, aluminium	wear	replacing	every 6 months	36 months
15	SK0765-2R/AL	cover plate, left medial or right lateral, aluminium				
16	SC1405-L14	countersunk flat head screw with hexalobular socket	wear	replacing	every 6 months	36 months
17	SC1406-L14	countersunk flat head screw with hexalobular socket (axle screw)				
Pulling Cable (If Existing). You need one pulling cable adaptor for each locking pawl to mount a pulling cable on.						
18	ZS1000-L400	pulling cable, nylon cable with cover, 400mm	wear	replacing	every 6 months	36 months
18	ZS1000-L500	pulling cable, nylon cable with cover, 500mm				
18	ZS1000-L600	pulling cable, nylon cable with cover, 600mm				
18	ZS1000-L700	pulling cable, nylon cable with cover, 700mm				
18	ZS1100-L400	pulling cable, separable through coupler, 400mm				
18	ZS1100-L500	pulling cable, separable through coupler, 500mm				
System Anchors and System Side Bars						
19	see catalogue	system anchor and system side bar	wear or breakage	replacing	every 6 months	if required

* depending on the assessment of the distributor of the custom-made product regarding the patient's usage behaviour

** If you need a step lock pawl for right lateral or left medial as opposed to a step lock pawl for left lateral or right medial listed here, you have to replace the L in the article number with an R. Example: SK0765-R/025.

*** The step lock pawl and step lock stop disc are subject to faster wear. This may result in shorter maintenance intervals.